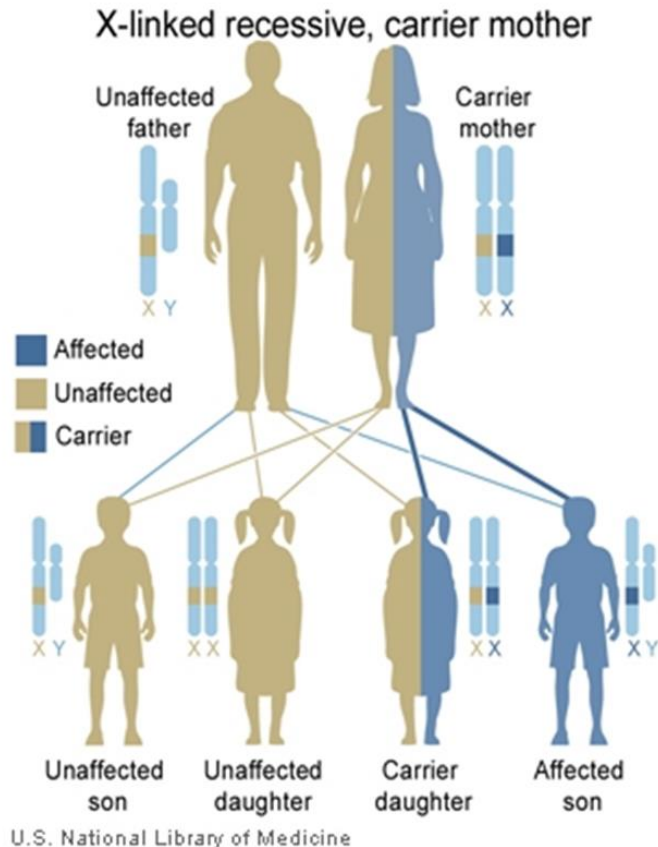


# Carrier Status for X-linked Recessive Conditions



- We each have a pair of chromosomes that determine if we are male or female.

- **Women are XX.**

- **Men are XY.**

- **X-linked conditions** are caused by changes in a gene carried on the X chromosome.

- Women with one non-working copy of the gene are **carriers**. They have a second working copy of the gene on their other X chromosome.

- A carrier **does not** have the recessive genetic condition.

- Men with a change on the X chromosome are **affected**, or have the condition. They have only one copy of the gene and it is non-working.

- If a woman is a carrier for an X-linked condition, her sons are at a 50% risk of having the genetic condition.

- Her daughters are at 50% risk of being carriers but will not be affected.